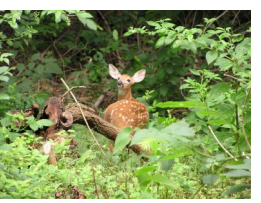


LAUREL CREEK COUNTRY CLUB



**TURF MANAGEMENT
SUMMER INTERNSHIP PROGRAM**



ABOUT LAUREL CREEK



- ♦ **REGULATION 18 HOLE GOLF COURSE, 6917 YARDS, PAR 71.**
- ♦ **LOCATED 20 MILES OUTSIDE OF PHILADELPHIA.**
- ♦ **ARNOLD PALMER SIGNATURE DESIGN GOLF COURSE.**
- ♦ **CONSTRUCTION BEGAN IN 1988 AND WAS COMPLETED IN 1990.**
- ♦ **CONTAINS 40 ACRES OF PROTECTED WETLANDS.**
- ♦ **CERTIFIED AUDUBON COOPERATIVE SANCTUARY.**



OUR MISSION STATEMENT



LAUREL CREEK COUNTRY CLUB IS CHARACTERIZED BY AN ACTIVE MEMBERSHIP THAT SHARES A UNIQUE SOCIAL EXPERIENCE BUILT UPON **OUTSTANDING GOLF, A DYNAMIC FAMILY ENVIRONMENT AND THE SUPERIOR SERVICE AND AMENITIES OF A PREMIER COUNTRY CLUB.**

OUR R.E.C.I.P.E. FOR SUCCESS:

RELATIONSHIPS

EXCELLENCE

COMMUNICATION

IMPROVEMENT

PASSIONATE

EMPOWERMENT

WHAT IS OUTSTANDING GOLF?



- ◆ ATTENTION TO DETAIL
- ◆ EXCEED THE EXPECTATIONS OF EVERY MEMBER, EVERY TIME
- ◆ CONTINUOUS IMPROVEMENT
- ◆ REWARDING AND CHALLENGING GOLF EXPERIENCE
- ◆ MAINTAINING NATURAL CHARACTERISTICS
- ◆ CULTIVATE AN IDENTITY



FROM THE SUPERINTENDENT



DIRECTOR OF GOLF COURSE OPERATIONS

JOHN SLADE

I sincerely appreciate your interest in Laurel Creek Country Club. Your internship experience here will be diverse and well-rounded, providing you hands-on experience that can help you in the future, regardless of your career path. Turfgrass management requires a wide-ranging skill set, including knowledge of soils, environmental best practices, water and pest management. At Laurel Creek, you will be surrounded by a seasoned, knowledgeable staff, who can take you beyond the “how” of turfgrass management, and help you to better understand the “why” of what we do. As a Club, Laurel Creek is always seeking to improve the golf course, both through the continued use of sound fundamental agronomic practices, as well as the implementation of a Master Plan. We look forward to sharing this experience with you—your success is our priority.

Regards,

John Slade



**A TEAM MEMBER
TOPDRESSING FINE
FESCUE.**



**A BUSY MORNING
WITH TEAM
MEMBERS MOWING
GREENS AND
RAKING BUNKERS.**



**OUR SUMMER AERATION
PROCEDURE.**

PROGRAM GOALS



- ◆ INTRODUCE CANDIDATES TO THE DAILY OPERATION OF A PREMIER GOLF COURSE
- ◆ INSTRUCT CANDIDATES IN THE BEST MANAGEMENT PRACTICES FOR THE GROWTH AND DEVELOPMENT OF A SUPERIOR PLAYING SURFACE
- ◆ APPLY THE PRINCIPLES OF ENVIRONMENTAL AND PLANT SCIENCE IN THE CONTEXT OF TURFGRASS MANAGEMENT
- ◆ BUILD THE FOUNDATIONS FOR THE PURSUIT OF A CAREER IN TURF MANAGEMENT



WHAT YOU WILL LEARN



CANDIDATES WILL ASSIST IN ALL ASPECTS OF GOLF COURSE MANAGEMENT, INCLUDING BUT NOT LIMITED TO:

- ♦ **HAND WATERING OF ALL TURF AREAS**
- ♦ **MOWING OF ALL TURF AREAS**
- ♦ **REGULAR BUNKER REPAIR AND MAINTENANCE**
- ♦ **GOLF COURSE SET-UP**
- ♦ **IMPLEMENTATION OF CULTURAL PRACTICES**
- ♦ **FERTILIZER AND PLANT PROTECTANT CALIBRATION AND APPLICATION**
- ♦ **IRRIGATION TROUBLESHOOTING AND MAINTENANCE**
- ♦ **EQUIPMENT OPERATION**
- ♦ **SMALL CREW LEADERSHIP OPPORTUNITIES**
- ♦ **HANDS ON EXPERIENCE WITH LAUREL CREEK EQUIPMENT MANAGER REVIEWING ALL ASPECTS OF EQUIPMENT AND REEL MAINTENANCE**



Integrated Pest Management

Take part in all phases of a state of the art IPM program.

Applications of Environmental Science In Golf Turf Management

Water Conservation

Learn sustainable irrigation management practices.

Soil Ecology

Learn about the soil conditions and micro-organisms that contribute to the growth of healthy plants.

Conservation Programs

Become familiar with the requirements associated with the Audubon Cooperative Sanctuary Program for Golf Courses as well as other preservation programs.

Technology

Introduction to the machines used in the turf management industry.

Intern Expectations



- Be **ON TIME**
- Always **CARRY PAPER, PEN, WATCH, AND SOIL PROBE** on you at all times
- Have a **POSITIVE ATTITUDE, BE MOTIVATED,** and **BE DEDICATED**
- **ASK** questions
- **TAKE NOTES;** keep a daily log of mowing, heights of cut, projects, fertilizer/spray applications, etc.
- Be a **TEAM PLAYER** and **LEAD BY EXAMPLE**
- Be **PROFESSIONAL** at all times
- **MAINTAIN** company uniforms in a neat and clean manner so that you will have a professional appearance at all times
- **COMMUNICATE**
- **BE COURTEOUS** to members and to the extent possible, try to stay clear of members
- Be a **HARD WORKER**
- **CELL PHONES** are to be used on **PERSONAL TIME ONLY** and **NEVER AROUND MEMBERS** on the golf course
- **BE SAFE!** Follow all safety rules, i.e., wear eye protection, wear ear plugs, drive safely, etc.

Most importantly,

HAVE FUN!

POTENTIAL CANDIDATES



- ◆ **MUST BE 18 YEARS OF AGE TO APPLY**
- ◆ **MUST HAVE AN INTEREST IN TURF MANAGEMENT**
- ◆ **CURRENTLY PURSUING A DEGREE IN TURF SCIENCE OR A RELATED FIELD**
- ◆ **RECENT HIGH SCHOOL GRADUATE EXPLORING CAREER OPPORTUNITIES**
- ◆ **CURRENT TURF STUDENT LOOKING FOR A SUMMER INTERNSHIP**
- ◆ **MUST POSSESS A GOOD WORK ETHIC, POSITIVE ATTITUDE AND WILLINGNESS TO LEARN**



HOW TO APPLY



**EMAIL A PERSONAL STATEMENT AND UPDATED RÉSUMÉ TO
LUKE KRINGLER AT lkringler@laurelcreek.org.**

**YOUR PERSONAL STATEMENT SHOULD INTRODUCE YOURSELF AND
DESCRIBE YOUR INTEREST IN THE PROGRAM.**

**INCLUDE ANY QUALITIES THAT YOU BELIEVE WILL MAKE YOU
SUCCESSFUL IN THIS PROGRAM.**

**AFTER YOUR PERSONAL STATEMENT AND RÉSUMÉ ARE
REVIEWED AN INTERVIEW WITH GOLF COURSE SUPERINTENDENT
JOHN SLADE WILL BE ARRANGED.**



GAIN RELEVANT EXPERIENCE DURING YOUR UNDERGRADUATE



- ◆ **OUR BUSIEST TIME OF YEAR IS MARCH THROUGH NOVEMBER.**
- ◆ **SPEND YOUR SUMMER AT LAUREL CREEK AS AN INTERN.**
- ◆ **POTENTIALLY RECEIVE COLLEGE CREDIT.**
- ◆ **GRADUATE FROM COLLEGE WITH 4 SEASONS OF EXPERIENCE IN A RELATED FIELD.**



YOUR FUTURE IN TURF



THE STAFF AT LAUREL CREEK HAS THE EXPERIENCE AND CONNECTIONS TO PROPEL YOU INTO A CAREER IN TURF MANAGEMENT.

TWO YEAR PROGRAM ROUTE

- ♦ **JOIN THE STAFF AT LAUREL CREEK THROUGH THE SUMMER INTERNSHIP PROGRAM**
- ♦ **WHILE EMPLOYED AT LAUREL CREEK PARTICIPATE IN THE RUTGERS UNIVERSITY PROFESSIONAL GOLF TURF MANAGEMENT THREE-WEEK PROGRAM**
- ♦ **APPLY TO THE RUTGERS UNIVERSITY PROFESSIONAL GOLF TURF MANAGEMENT SCHOOL (TWO YEAR CERTIFICATE PROGRAM)**
- ♦ **BETWEEN SESSIONS OF THE TWO YEAR PROGRAM COMPLETE YOUR SUMMER INTERNSHIP AT LAUREL CREEK**
- ♦ **COMPLETE YEAR TWO OF TURF SCHOOL**

UPON GRADUATION FROM THE RUTGERS UNIVERSITY PROFESSIONAL GOLF TURF MANAGEMENT SCHOOL YOU WILL NOT ONLY HAVE A CERTIFICATE IN GOLF TURF MANAGEMENT, BUT ALSO THREE SEASONS OF EXPERIENCE AT A PREMIER PRIVATE COUNTRY CLUB.



LAUREL CREEK COUNTRY CLUB

701 CENTERTON ROAD

MT. LAUREL, NJ 08054

PHONE: (856) 234-7663

LAUREL CREEK TURF CARE BLOG

laurelcreeksuper.blogspot.com

FOR MORE INFORMATION CONTACT:

LUKE KRINGLER

ASSISTANT SUPERINTENDENT

lkringler@laurelcreek.org

PHONE: (609) 668-8753